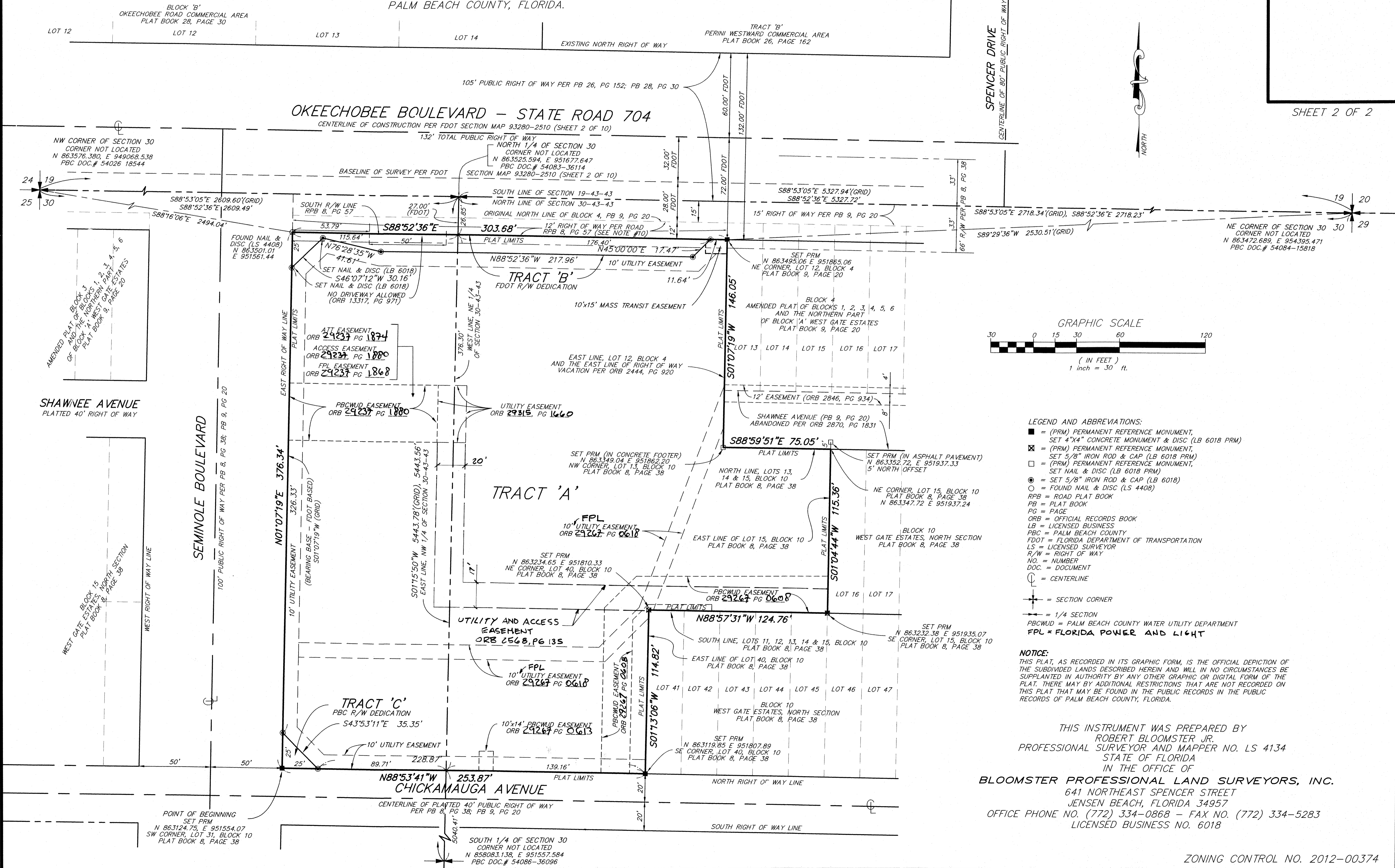


CUMBERLAND FARMS WESTGATE

A REPLAT OF ALL OF LOTS 1 THROUGH 12, BLOCK 4, LESS THE NORTH 12 FEET THEREOF, OF THE AMENDED PLAT OF BLOCKS 1, 2, 3, 4, 5, 6 AND THE NORTHERN PART OF BLOCK 'A', WEST GATE ESTATES, NORTHERN SECTION, ACCORDING TO THE PLAT THEREOF AS RECORDED IN PLAT BOOK 9, PAGE 20, PUBLIC RECORDS OF PALM BEACH COUNTY, FLORIDA AND LOTS 1 THROUGH 15 AND 31 THROUGH 40, BLOCK 10, OF WEST GATE ESTATES, NORTHERN SECTION, ACCORDING TO THE MAP OR PLAT THEREOF AS RECORDED IN PLAT BOOK 8, PAGE 38, PUBLIC RECORDS OF PALM BEACH COUNTY, FLORIDA, TOGETHER WITH THAT PORTION OF RIGHT OF WAY ABANDONED IN OFFICIAL RECORD BOOK 2444, PAGE 920, PUBLIC RECORDS OF PALM BEACH COUNTY, FLORIDA LYING SOUTH OF SAID LOTS 5 THROUGH 12, BLOCK 4 AND NORTH OF LOTS 5 THROUGH 12, BLOCK 10, LYING IN SECTION 30, TOWNSHIP 43 SOUTH, RANGE 43 EAST, PALM BEACH COUNTY, FLORIDA.



LEGEND AND ABBREVIATIONS:

- = (PRM) PERMANENT REFERENCE MONUMENT, SET 4"x4" CONCRETE MONUMENT & DISC (LB 6018 PRM)
- ⊠ = (PRM) PERMANENT REFERENCE MONUMENT, SET 5/8" IRON ROD & CAP (LB 6018 PRM)
- = (PRM) PERMANENT REFERENCE MONUMENT, SET NAIL & DISC (LB 6018 PRM)
- ⊙ = SET 5/8" IRON ROD & CAP (LB 6018)
- = FOUND NAIL & DISC (LS 4408)
- RPB = ROAD PLAT BOOK
- PB = PLAT BOOK
- PG = PAGE
- ORB = OFFICIAL RECORDS BOOK
- LB = LICENSED BUSINESS
- PBC = PALM BEACH COUNTY
- FDOT = FLORIDA DEPARTMENT OF TRANSPORTATION
- LS = LICENSED SURVEYOR
- R/W = RIGHT OF WAY
- NO. = NUMBER
- DOC. = DOCUMENT
- ⊕ = CENTERLINE
- ⊕ = SECTION CORNER
- ⊕ = 1/4 SECTION
- PBCWUD = PALM BEACH COUNTY WATER UTILITY DEPARTMENT
- FPL = FLORIDA POWER AND LIGHT

NOTICE:
THIS PLAT, AS RECORDED IN ITS GRAPHIC FORM, IS THE OFFICIAL DEPICTION OF THE SUBDIVIDED LANDS DESCRIBED HEREIN AND WILL IN NO CIRCUMSTANCES BE SUPPLANTED IN AUTHORITY BY ANY OTHER GRAPHIC OR DIGITAL FORM OF THE PLAT. THERE MAY BE ADDITIONAL RESTRICTIONS THAT ARE NOT RECORDED ON THIS PLAT THAT MAY BE FOUND IN THE PUBLIC RECORDS IN THE PUBLIC RECORDS OF PALM BEACH COUNTY, FLORIDA.

THIS INSTRUMENT WAS PREPARED BY
ROBERT BLOOMSTER JR.
 PROFESSIONAL SURVEYOR AND MAPPER NO. LS 4134
 STATE OF FLORIDA
 IN THE OFFICE OF
BLOOMSTER PROFESSIONAL LAND SURVEYORS, INC.
 641 NORTHEAST SPENCER STREET
 JENSEN BEACH, FLORIDA 34957
 OFFICE PHONE NO. (772) 334-0868 - FAX NO. (772) 334-5283
 LICENSED BUSINESS NO. 6018